

DOVER FAMILY PHYSICIANS, P.A.

JEROME L. ABRAMS, M.D.
MICHAEL J. BRADLEY, D.O.
JOSEPH F. RUBACKY, III, D.O., FAAFP

SHARAD PATEL, M.D.
FREDERICK C. BRACE, PA-C
STEPHANIE BEHRENS, PA-C

1342 SOUTH GOVERNORS AVENUE • DOVER, DELAWARE 19904
PHONE: (302) 734-2500

HAS AN APPOINTMENT ON

DAY	MONTH	DATE
AT	A.M.	P.M.

PLEASE TELEPHONE ONE DAY IN ADVANCE IF YOU WILL BE UNABLE TO KEEP THE APPOINTMENT



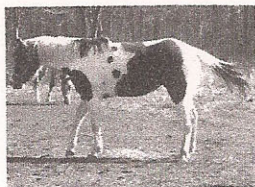
First State Crane Service, Inc.

13326 S. DUPONT HWY.
FELTON, DELAWARE 19943

JAMES N. HAUER
OFFICE MANAGER

PH: (302) 284-3100
FAX: (302) 284-9114

EMAIL: jim@firststatecrane.com



Equine Endeavors LLC

Breeding & Selling Quality Paint
Horses

Tim Griesa
400 Almshouse Rd.
Wyoming, DE
19934

Phone (302) 697-9480
Phone (302) 521-346
Fax (302) 535-8265
fatcatata@comcast.net